

Neuroscience Services

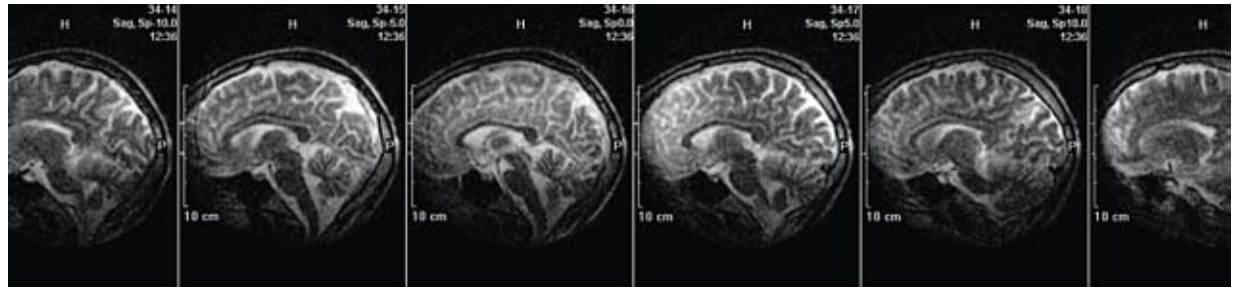
For years, University of California, Irvine Medical Center has been a leader in the treatment of injuries and diseases affecting the brain and nervous system.

Now, with its move to the new

University Hospital, the medical center's neurosciences unit will have a state-of-the-art setting that matches its leading-edge services.

"Because UC Irvine Medical Center is Orange County's only Level I trauma center, patients with severe brain injuries are admitted to the hospital on a regular basis," says **Dr. Mark Linskey**, chair of neurological surgery and co-director of the Comprehensive Brain Tumor Program. "Furthermore, because we're a referral center, many hospitals transfer their neuroscience patients to us for care, including those with brain tumors, epilepsy, spinal cord injuries, movement disorders and stroke."

Progressive care. Occupying almost the entire fifth floor of the new hospital, the neuroscience unit will include a 12-bed neuro intensive care unit, a 15-bed neuro step-down unit



and a 15-bed neuro-ortho-trauma medical/surgical unit. This represents a 40 percent increase in capacity over its former location in the original hospital. Because three different levels of care are provided on this floor, patients can remain in familiar surroundings as they progress through their recovery.

The new hospital is a shining example of modern healthcare design. The neuroscience ICU, which has five more beds than previously, features spacious, private rooms in which family members can stay overnight. Staffed by a multidisciplinary team that includes full-time neurological specialists, critical care physicians and highly trained neuroscience nurses, the neuro ICU is equipped with the most advanced monitoring systems available. Since a quiet environment is extremely important for neuro patients, strategies to reduce noise are used throughout the unit, including special acoustical materials, a conference room

that eliminates hallway meetings, and a dedicated workroom for doctors and nurses.

Interfacing seamlessly with the ICU, the hospital's neuroscience step-down unit shares the same patient-friendly architectural

features. Fully equipped with highly specialized brain-monitoring equipment, this unit provides a safe, closely monitored transition for patients discharged from the neuro ICU. For others, such as a majority of stroke patients, the step-down unit is the point of entry for inpatient hospitalization after emergency care. The unit also has six dedicated beds for epilepsy patients.

Advanced options. "UC Irvine Medical Center was the first facility in Orange County to be certified as a Primary Stroke Center by The Joint Commission and was awarded the organization's Gold Seal of Approval in recognition of the exceptional efforts made to achieve better outcomes in stroke care," says **Dr. Steven Schreiber**, chair of neurology. "The medical center is also designated as a fourth-level comprehensive epilepsy center, signifying that we offer the most advanced diagnostic and therapeutic options for this condition available anywhere."

Patients admitted to the medical/surgical unit, which is the least-intensive level of care, enjoy the same highly specialized, family-friendly environment—but with less monitoring—to help them toward recovery. "The hospital is state-of-the-art," says Linskey. "It will provide a comfortable and beneficial environment for patients, and a leading-edge setting in which to teach the brain specialists of tomorrow. The new hospital will also help the staff work more efficiently. It's the expertise and compassion of our neurologists, neurosurgeons, interventional neuroradiologists and neuroscience nurses that make the difference."

PROBING THE BRAIN

Dr. Devin Binder performs deep brain stimulation surgery for movement disorders and epilepsy surgery to eliminate seizures. He also conducts stem cell research to discover a way to restore movement to spinal cord injury patients.

