

University of California, Irvine
Comprehensive Epilepsy Program

Presents



The Fifth Annual UC Irvine Epilepsy Symposium

**Manipulating Neural Networks
to Treat Refractory Epilepsy**

Saturday, January 23, 2010

The Arnold and Mabel Beckman Center
of the National Academies of Science and Engineering
University of California, Irvine

100 Academy Way
Irvine, CA 92617

Symposium Program

7:30 am	REGISTRATION and BREAKFAST
8:00–	Welcome
8:10 am	Howard L. Kim, MD
8:10–	Introductory Remarks
8:20 am	Ralph Clayman, MD, Dean (Interim) UC Irvine School of Medicine Terry Belmont, CEO, UC Irvine Medical Center
8:20–	Case presentation and overview
8:50 am	of palliative surgical strategies Howard L. Kim, MD
8:50–	Functions and vulnerabilities of
9:30 am	key brain regions that contribute to neuronal networks in the epileptic brain Tallie Z. Baram, MD
9:30–	Session I—Panel Discussion Q & A
9:50 am	
9:50 am	BREAK
10:10–	Eligibility for palliative surgery:
10:40 am	Epilepsy seizure types & syndromes Jack J. Lin, MD
10:40–	Vagus and trigeminal nerve stimulation
11:25 am	for epilepsy Christopher DeGiorgio, MD
11:25 am–	Electrical stimulation of the brain:
12:10 pm	An emerging therapy for epilepsy treatment John F. Kerrigan, MD
12:10–	Session II—Panel Discussion Q & A
12:30 pm	
12:30–	LUNCH
1:30–	Corpus callosotomy
2:00 pm	Devin K. Binder, MD
2:00–	Lateralization of cognitive function
2:30 pm	and neuropsychological outcome from corpus callosotomy Kirsten Fleming, PhD
2:30–	Session III—Panel Discussion Q & A
2:50 pm	
2:50–	Closing remarks
3:00 pm	Howard L. Kim, MD
3:00 pm	ADJOURN

Course Description & CME Accreditation

Course Description

This one-day symposium is designed for professionals and caregivers who participate in the care of people with epilepsy. The conference is presented by the esteemed faculty of the UC Irvine Comprehensive Epilepsy Program. This year's guest faculty members are Christopher DeGiorgio, MD, professor of neurology, UCLA School of Medicine, and John F. Kerrigan, MD, assistant professor of clinical pediatric and neurology, Arizona College of Medicine. This unique symposium will focus on recent advances in the diagnosis and treatment of intractable epilepsy. The aim of this course is to present information that will facilitate treatment for those individuals who may be candidates for a surgical remedial procedure for their intractable epilepsy.

Learning Objectives

- Understand how recent advances in imaging and video-EEG monitoring can help identify suitable candidates for palliative surgical treatments of epilepsy.
- Understand the current knowledge of the mechanisms underlying intractable epilepsies.
- Recognize the indications, techniques, and risks of corpus callosotomy.
- Recognize the emerging indications, techniques, and risks of neurostimulation.

Target Audience

Physicians, nurses, allied healthcare providers, individuals with epilepsy, and family members who want to expand and update their knowledge of current research, clinical diagnosis, management, emerging treatments, as well as cognition and quality-of-life issues related to complicated epilepsy.

Accreditation Statement

The University of California, Irvine School of Medicine is accredited by the Accreditation Council for Continuing Medical Education to provide continuing medical education for physicians.

Designation Statement

The University of California, Irvine School of Medicine designates the educational activity for a maximum of 5.25 AMA PRA Category 1 Credits.™

Disclosure

It is the policy of the University of California, Irvine School of Medicine and the University of California CME Consortium to ensure balance, independence, objectivity and scientific rigor in all CME activities. Full disclosure will be made in writing via the handout materials or syllabus.

AB1195 Statement

California Assembly Bill 1195 requires continuing medical education activities with patient care components to include curriculum in the subjects of cultural and linguistic competency. It is the intent of the bill, which went into effect on July 1, 2006, to encourage physicians, surgeons, CME providers in the state of California, and the Accreditation Council for Continuing Medical Education to meet the cultural and linguistic concerns of a diverse patient population through appropriate professional development. The planners, speakers and authors of this CME activity have been encouraged to address issues relevant in their topic area. In addition, a variety of resources are available that address cultural and linguistic competency, some of which are included in your syllabus or handout materials. Additional resources and information about AB1195 can be found on our Web site at www.cme.uci.edu.

ADA Statement

In compliance with the Americans with Disabilities Act, we will make every reasonable effort to accommodate your needs. For any special requests, please contact Laurie Gumser at 714.456.3707 on or before January 10, 2010.

Faculty

Invited Faculty



Christopher DeGiorgio, MD
Vice Chair and Professor
in Residence of Neurology
UCLA
School of Medicine



John F. Kerrigan, MD
Director, Pediatric Epilepsy Program
Co-Director, Hypothalamic Hamartoma Program
Barrow Neurological Institute
Assistant Professor of Clinical Pediatric and Neurology
Arizona College of Medicine

UC Irvine Faculty



Howard L. Kim, MD
Course Director
Associate Clinical Professor
Department of Neurology
Clinical Director
UC Irvine Comprehensive Epilepsy Program



Tallie Z. Baram, MD, PhD
Professor, UC Irvine Department of Pediatrics,
Neurology, and Anatomy & Neurobiology
Chair, Executive Committee
UC Irvine Epilepsy Research Center
Scientific Director, UC Irvine Comprehensive Epilepsy Program



Devin K. Binder, MD, PhD
Assistant Professor
Department of Neurological Surgery
Director, Epilepsy and Functional Neurosurgery Service
Surgical Program Director, UC Irvine Comprehensive Epilepsy Program



Kirsten Fleming, PhD
Neuropsychologist, Associate Clinical Professor,
University of California, Irvine Department of Neurology



Jack J. Lin, MD
Assistant Clinical Professor
Department of Neurology
Director, Clinical Neurophysiology Fellowship
UC Irvine Comprehensive Epilepsy Program

REGISTRATION FORM

Early registration encouraged due to limited enrollment.

- **Registration Fee:** Physician **\$75.00**
 Nurse or allied healthcare professional **\$25.00**

Registration Complimentary for patients and family members
 Patient/Family

- **Information:** 714.456.3707
- Please detach and mail this form with check, money order (payable to UC Regents) or credit card information to:

UC Irvine Medical Center
333 City Blvd. West, Suite 1205 • Orange, CA 92868
Attn: Laurie Gumser, Business Development
714.456.3707 • lgumser@uci.edu

Or you may fax this form with credit card information to:
Business Development at 714.456.7713

Name (Please Print)

Title

Office Address

Suite Number

City, State, Zip Code

Phone

Fax

E-mail (required for registration confirmation) (Please Print)

License Number or last 5 digits of your Social Security number (mandatory)

CREDIT CARD INFORMATION

Form of Payment: American Express Visa MasterCard

Charge \$ _____ to my credit card

Payment by credit card requires the following information:

Cardholder's Name (first and last)

Credit Card Number

Expiration Date

Cardholder's Signature

REFUND POLICY

If unable to attend, a refund of course fee will be made only upon proper notification (10 business days prior to the conference) to Business Development, UC Irvine Medical Center. Failure to observe the refund policy or "no show" will result in forfeiture of course fee. A processing fee of \$20.00 will be assessed for all refunds.

UC IRVINE
COMPREHENSIVE EPILEPSY PROGRAM

UC IRVINE • HEALTHCARE

www.ucihealth.com/epilepsy

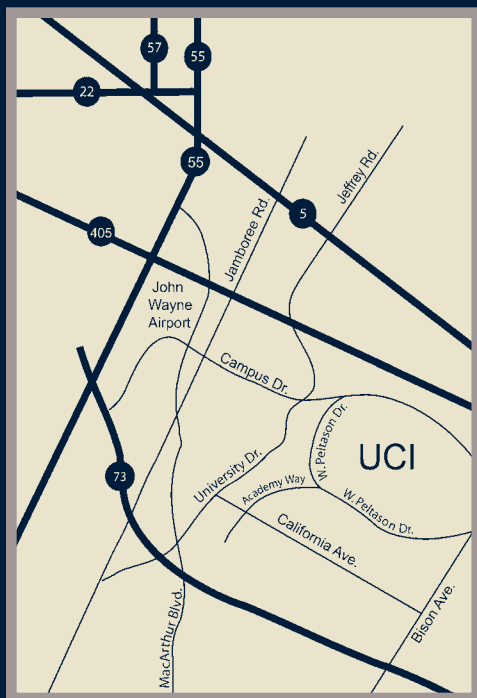
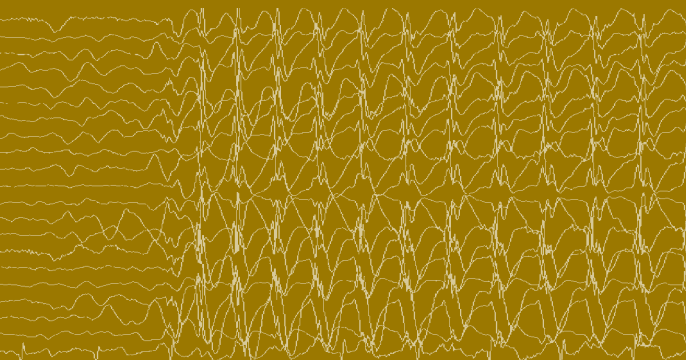
333 City Blvd. West, Suite 1205
Orange, CA 92868

Presorted
First-Class Mail
U.S. Postage
PAID
Santa Ana, CA
Permit No. 1106

*The Fifth Annual
UC Irvine Epilepsy Symposium*

Manipulating Neural Networks
to Treat Refractory Epilepsy

Saturday, January 23, 2010



Manipulating Neural Networks
to Treat Refractory Epilepsy

and

*The Fifth Annual
UC Irvine Epilepsy Symposium*

Saturday, January 23, 2010

The Arnold and Mabel Beckman Center
of the National Academies of Science and Engineering
University of California, Irvine

100 Academy Way, Irvine, CA 92617