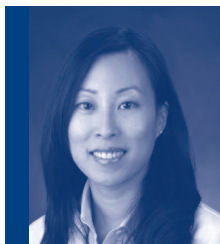


# Physician to Physician

Published biannually

VOLUME 8 • ISSUE 1 • SPRING 2009

## New to University of California, Irvine Healthcare

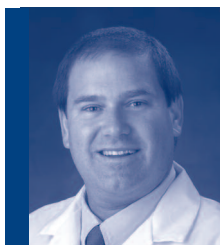


**Jane C. Ahn, MD • Anesthesiologist**

Dr. Jane C. Ahn is director of acute pain service and regional anesthesia at UC Irvine Healthcare. Her expertise comprises all aspects of managing acute and chronic pain and includes thoracic epidurals, ultrasound-guided peripheral nerve blocks and fluoroscopic interventional procedures.

Ahn received her medical degree from Mount Sinai School

of Medicine in New York and served an internship in general surgery at Pennsylvania Hospital in Philadelphia. Ahn returned to Mount Sinai Medical Center for a residency in anesthesiology and completed a fellowship in pain management at Stanford University Hospital in Palo Alto. Prior to her arrival at UC Irvine, Ahn was an anesthesiologist and pain physician with the VA Palo Alto Healthcare System, treating polytrauma patients returning from Iraq and Afghanistan.



**Matthew J. Butteri, MD • Internist and Geriatrician**

Dr. Matthew J. Butteri is an internist with particular expertise in the diagnosis and treatment of older adults. His areas of specialty include cancer screening, dementia, preventive medicine (diabetes and hypertension), interactions of multiple medications, hospice and end-of-life care. Butteri also is interested in empowering and improving the training of and interaction with nursing and medical assistants.

Butteri earned a master's degree in nutrition at Columbia University in New York and a medical degree at the Keck-University of Southern California School of Medicine. He completed a residency in internal medicine at Huntington Memorial Hospital in Pasadena and a two-year clinician-educator fellowship in geriatrics at Johns Hopkins Hospital in Baltimore. He is a member of the American Geriatrics Society and is board-certified in internal medicine and geriatrics.



**Matthew H.G. Katz, MD • Surgical Oncologist**

Dr. Matthew H.G. Katz specializes in the multidisciplinary evaluation and treatment of cancers and other diseases of the pancreas, liver and gastrointestinal tract. His surgical expertise includes the Whipple procedure for pancreatic tumors, distal and total pancreatectomy, laparoscopic pancreatectomy and liver resection. He also coordinates therapy for cancer patients for whom surgery is not an option. Katz emphasizes a comprehensive multimodal approach to managing cancer, and is researching tumor-shrinking strategies to be used before surgery in pancreatic cancer patients.

Katz earned his medical degree at New York Medical College and completed a general surgical residency at UC San Diego. He comes to UC Irvine from University of Texas M.D. Anderson Cancer Center, where he completed advanced training in surgical oncology. His research into treatment adjuncts to surgery for pancreatic cancer patients has been published in major medical journals and has led to national awards. He is a member of the American Association for Cancer Research, the Society of Surgical Oncology and the American College of Surgeons.



**David W. Kruse, MD • Family and Sports Medicine Physician**

Dr. David W. Kruse, a family medicine physician, has been appointed director of primary care sports medicine within the Department of Family Medicine. He specializes in the diagnosis, treatment and rehabilitation of sports injuries, working with competitive athletes and those who participate in recreational, endurance and extreme sports. Kruse offers expertise in the care of acute and chronic musculoskeletal injuries, general medical needs of the athlete, including concussion management, and education and counseling

on the prevention of injury and illness. Kruse works with local sports clubs and high schools, as well as UC Irvine's intercollegiate athletes.

Kruse earned his medical degree from UC San Diego and completed his residency in family medicine at Long Beach Memorial Medical Center. While completing a fellowship in sports medicine at Memorial Hospital of South Bend, Ind., he also served as a team physician at the University of Notre Dame and other area colleges and schools. A six-time all-American NCAA gymnast as an undergraduate at UC Berkeley, Kruse has developed particular expertise in the care of injured gymnasts and serves on the medical staff of USA Gymnastics.



**Danielle Perret-Karimi, MD • Interventional Physiatrist**

Dr. Danielle M. Perret-Karimi is an interventional physiatrist with UC Irvine Healthcare's pain management service and directs the medical center's fellowship program in pain medicine. Her clinical and research interests include the comprehensive and multimodal treatment of pain and dysfunction involving the musculoskeletal system, the brain and spine, as well as sports injuries and pain experienced by older adults.

Perret-Karimi earned her medical degree at the University of Medicine & Dentistry of New Jersey's Robert Wood Johnson Medical School. She completed a residency in physical medicine and rehabilitation at Mount Sinai Medical Center in New York, where she served as chief resident. She also completed a fellowship in pain medicine at UC Irvine Medical Center. She is a member of the American Pain Society, the International Spine Intervention Society and the American Academy of Physical Medicine & Rehabilitation.



**Gregory Rafijah, MD • Hand Surgeon**

Dr. Gregory Rafijah specializes in surgery of the hand, wrist and elbow, with particular expertise in microsurgery and the treatment of traumatic disorders, instability of the wrist and elbow, and arthritis of the hand. His research is focused on nerve injury and regeneration, biomechanics of the wrist and elbow, flexor tendon injury, thumb arthritis and carpal tunnel syndrome.

Rafijah earned his medical degree from the Chicago Medical School and served his residency in orthopaedics at Harbor-UCLA Medical Center. He completed a fellowship in hand and microvascular surgery at the University of Washington in Seattle and served as chief of hand surgery at UCLA-Harbor General for 10 years. He is a member of the American Society for Surgery of the Hand, the American Academy of Orthopaedic Surgeons, the California Orthopaedic Association and the Southern California Society for Hand Surgery.



**G. "Ty" Thaiyananthan, MD • Neurosurgeon**

Dr. G. "Ty" Thaiyananthan is the new co-director of the UC Irvine Comprehensive Spine Program. An expert in minimally invasive spine surgery and non-fusion surgery, Thaiyananthan treats all disorders of the spine in adults and children. He specializes in techniques for treating neck and back pain, herniated discs and scoliosis that are not readily available elsewhere in Southern California.

Thaiyananthan received his medical degree at UC San Francisco and completed his residency in neurosurgery at Yale-New Haven Hospital in Connecticut. He completed a combined orthopaedic and neurosurgery fellowship in minimally invasive and complex spine surgery at Cedars-Sinai Institute for Spinal Disorders in Los Angeles. He is a member of the Congress of Neurological Surgeons, the American Association of Neurological Surgeons, and the North American Spine Society.



UC IRVINE

## University Hospital Opens at UC Irvine Medical Center

UC Irvine's University Hospital opened in March, heralding a new chapter in healthcare for Orange County. The seven-story, 482,428-square-foot centerpiece of UC Irvine Medical Center offers the latest medical technologies and strengthens UC Irvine Healthcare's ability to provide the highest quality treatments.

University Hospital is located on the northern perimeter of UC Irvine Medical Center in Orange and has 236 beds, bringing the total number of medical center beds to 427. The new hospital features spacious patient rooms that have been designed to promote privacy and to accommodate multidisciplinary treatment teams. There are two dedicated cardiac catheterization lab suites and 15 state-of-the-science operating rooms, including eight specifically designed for minimally invasive surgery. The new hospital expands the existing burn center and provides

enhanced facilities in the neonatal care unit for high-risk and multiple births.

Four more ORs will be added during an ongoing second construction phase, and the NICU is expected to expand by 15 beds later this year. The \$555.9-million new hospital replaces the existing main hospital built in 1961.

"The new University Hospital provides unparalleled services, superbly trained physicians and compassionate care in a welcoming, spacious environment designed for optimal healing and comfort," said David. N. Bailey, M.D., UC Irvine vice chancellor for health affairs.

For more information, including a virtual tour of University Hospital, visit [www.ucihealth.com/universityhospital](http://www.ucihealth.com/universityhospital), or call 714.456.8352.

## News in Brief



Terry A. Belmont

New leadership has been appointed to direct UC Irvine Medical Center and the university's School of Medicine. **Terry A. Belmont**, formerly CEO of Long Beach Memorial Medical Center and Miller Children's Hospital, has been named interim CEO of UC Irvine Medical Center. He fills the vacancy created by the retirement of **CEO Maureen Zehntner**. Belmont also has been president and CEO of St. Joseph Hospital of Orange, Pacific Health Resources, California Hospital Medical Center and HealthForward.



Ralph V. Clayman, MD

**Dr. Ralph V. Clayman**, professor and chair of the Department of Urology, has been appointed interim dean of the UC Irvine School of Medicine. Clayman is widely recognized as the inventor of many minimally invasive urologic surgery techniques, revolutionizing the field and making kidney and other urinary tract surgery safer for patients. As dean, Clayman replaces **Dr. David N. Bailey**, who will continue in his role as vice chancellor for health affairs until his retirement July 1.

UC Irvine and Children's Hospital of Orange County have formed a **strategic affiliation to better serve children** and families. UC Irvine Medical Center will continue to provide pediatric services in emergency care, burn care, trauma care, neonatal intensive care, newborn nursery care, kidney transplantation and child and adolescent psychiatry. CHOC will provide inpatient and outpatient specialty care to pediatric patients. CHOC and UC Irvine will retain their individual institutional identities; the strategic alliance is not a merger.

A new weapon in the fight against cancer is available at UC Irvine Medical Center. **RapidArc™ radiotherapy** delivers powerful tumor-destroying radiation with unprecedented speed and remarkable precision, targeting cancer cells while avoiding healthy tissue. Treatment with the RapidArc is two to eight times faster than conventional radiotherapy, simultaneously improving the quality of care and the comfort of patients. For more information, please call the Department of Radiation Oncology at 714.456.5651.

UC Irvine's departments of Neurological Surgery and Otolaryngology will present a continuing medical education event, **A Multidisciplinary Approach to Skull Base Surgery** and the Sixth Annual John A. Kusske Lecture, on Saturday, April 25. The daylong event will be held at the Arnold and Mabel Beckman Conference Center on the university's Irvine campus. For more information, visit <http://neurosurgery.uci.edu/kusskelecture.shtml> or call 714.456.7713.

The **LASIK Refractive Center** has opened at UC Irvine's Gottschalk Medical Plaza, located on the Irvine campus. The LASIK Refractive Center is fully equipped with the state-of-the-art equipment, and ophthalmologists offer LASIK, custom LASIK, PRK and PTK. UC Irvine's Department of Ophthalmology faculty, led by Dr. Roger Steinert, are among the world's leading corneal and refractive surgeons and have been named in "America's Top Doctors" and "Best Doctors in America." For information, call toll free 888.322.1500.

**Dr. Deborah Wing**, division director and associate professor of clinical obstetrics and gynecology, has been elected director of the six-member Division Board in Maternal Fetal Medicine, under the authority of the American Board of Obstetrics and Gynecology (ABOG). Wing will serve a six-year term on the subspecialty board, which directly oversees the certification process of candidates who have completed a fellowship in the subspecialty.

For more news about UC Irvine Healthcare visit [www.ucihealth.com/news](http://www.ucihealth.com/news).

To refer a patient or learn more about UC Irvine Healthcare,  
please call 877.UCI.DOCS (877.824.3627) or visit [www.ucihealth.com](http://www.ucihealth.com)